

November 2023

MED ONC MD

OBX-115:

Revolutionizing Tumor-
Infiltrating Lymphocyte Therapy

Cellular Therapy Trial

Targeting MAGE-A1, HPV16,
and PRAME

Radiology's Role

in Early Cancer Detection

FDA Amends Pembrolizumab's

Gastric Cancer Indication: What You Need
to Know

Oncology review | Research advances | New treatments | Cancer prevention

Contents

5

OBX-115;

Revolutionizing Tumor-Infiltrating
Lymphocyte Therapy.

7

Cellular Therapy Trial

Targeting MAGE-A1, HPV16, and
PRAME

9

Radiology's Role

in Early Cancer Detection

11

FDA Amends Pembrolizumab's

Gastric Cancer Indication: What
You Need to Know

13

Neuroendocrine Cancer

Navigating Challenges and
Optimizing Quality of Life

15

Antibiotics in Oncology.

Navigating Their Use with Care and
Precision

Meet the team!

📍 Orlando - Florida

🌐 www.medoncmd.com

📷 📺 🎵 medoncmd

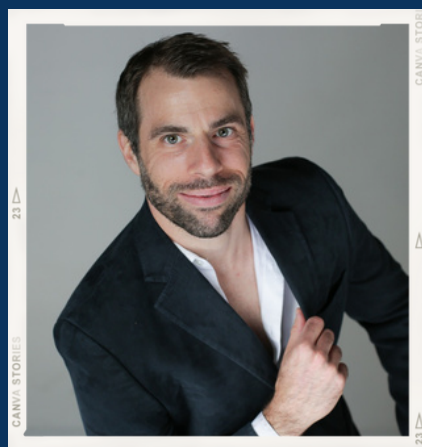
CLICK HERE



Dr. Sajeve Thomas

Dr. Sajeve Thomas, a certified medical oncologist and internal medicine specialist affiliated with the Orlando Health Cancer Institute, brings forth a wealth of expertise spanning more than ten years.

His clinical emphasis lies in the management of melanoma, sarcoma, and gastrointestinal disorders. Serving as a key investigator at the cancer center, he spearheads diverse clinical trials, investigating avant-garde treatment modalities, including targeted therapy, immunotherapy, intratumoral therapy, and intricate cellular therapies.



Dr. Daniel Landau

Dr. Daniel Landau, a renowned hematologist/oncologist certified by the board, possesses extensive expertise garnered from his tenure at the Orlando Health Cancer Institute and the Medical University of South Carolina. He is a prominent figure in the realms of genitourinary oncology and hematology.

Distinguished for his significant impact, Dr. Landau assumes the role of Director of Telemedicine Services, championing the incorporation of advanced technology in oncology. This initiative not only underscores his commitment to patient care but also aims to elevate the overall patient experience through the implementation of cutting-edge system designs.


Letter from the Author



*Our mission
remains steadfast
—to empower
patients,
caregivers, and
healthcare
providers with
knowledge*

Welcome to the second edition of MedOncMD, a platform dedicated to providing the latest and crucial information for cancer patients, caregivers, and healthcare providers. In this edition, we continue our commitment to bridging the informational gap often faced in oncology consultations. Drawing from over 12 years of experience in medical oncology, we recognize the challenges that both patients and their families encounter when dealing with cancer. MedOncMD is designed to empower you with the knowledge necessary to navigate the intricate landscape of cancer care.

Our mission remains steadfast—to empower patients, caregivers, and healthcare providers with knowledge. We delve into topics such as advancements in immunotherapy, personalized medicine, survivorship care, and the significance of mental health support during cancer treatment. Join us on this ongoing journey as we navigate the ever-evolving field of oncology together, providing reliable information and sharing inspiring stories that offer hope and resilience. At MedOncMD, our passion lies in making a meaningful difference in the lives of cancer patients and their families. We are eager to be your ally in the fight against cancer.

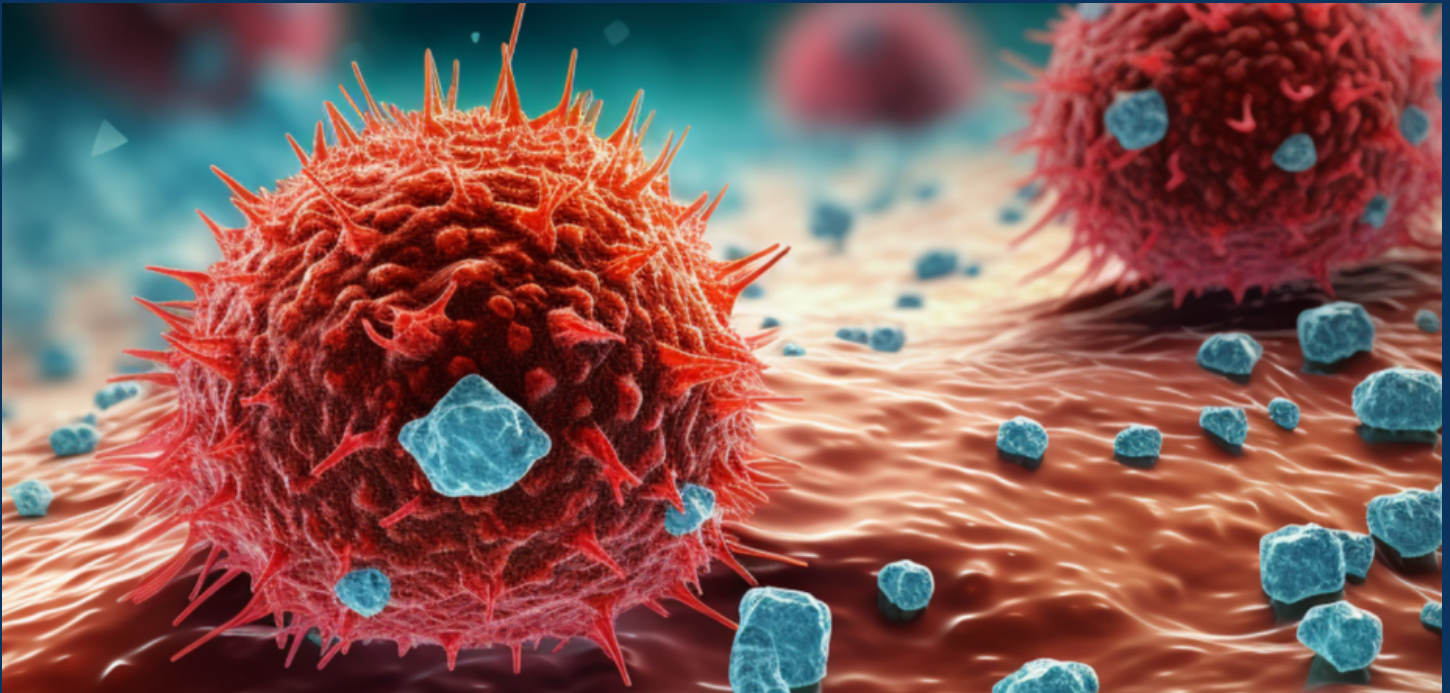


**OBX-115:
REVOLUTIONIZING
TUMOR-
INFILTRATING
LYMPHOCYTE
THERAPY**

OBX-115 could revolutionize TIL therapy, offering a treatment that is not only more bearable but also more accessible to a broader patient population, potentially changing the landscape of metastatic melanoma treatment

Read the full article

[READ BLOG](#)



In the dynamic landscape of cancer treatment, a groundbreaking evolution is underway with the introduction of OBX-115, a novel modified Tumor-Infiltrating Lymphocyte (TIL) protocol developed by Obsidian Therapeutics. Now open for enrollment at the Orlando Health Cancer Institute, OBX-115 marks a significant departure from traditional TIL therapy and is specific for metastatic melanoma, with promising potential for expansion into other tumor types in the near future.

Traditional TIL therapy has been a beacon of hope in the fight against metastatic melanoma, yet its challenges, particularly the reliance on high-dose IL2, have spurred the need for innovation. OBX-115 emerges as a game-changer, embedding a regulated membrane-bound IL-15, eliminating the requirement for concurrent IL2 therapy. Described as specialized soldiers within the body, these TILs, when activated by OBX-115, demonstrate autonomous proliferation and heightened precision in attacking cancer cells, all while mitigating the toxic side effects associated with IL2.

The activation key for OBX-115 lies in Acetazolamide, a medication known for other uses. Acting as a switch, Acetazolamide triggers the membrane-bound IL-15, initiating a cascade of enhanced potency, persistence, and anti-tumor efficacy compared to traditional TILs combined with IL2. This leap is not just a step forward; it's a paradigm shift, potentially broadening patient eligibility and making TIL therapy a more bearable and efficacious treatment option.

Cellular *Therapy* Trial

T-Plex marks a significant stride in OHCI's commitment to advancing innovative cancer therapies

By Dr. Sajeve Thomas



A Step Forward in Precision
Oncology Targeting MAGE-A1,
HPV16, and PRAME

Utilizing the patient's unique tumor profile, T-Plex crafts a personalized T cell receptor therapy (TCR-T) regimen, representing a novel approach to precision oncology

Orlando Health Cancer Institute (OHCI) is thrilled to introduce a cutting-edge Cellular Therapy trial by Tscan Therapeutics, employing a TCR protocol to target Melanoma, Head/Neck Cancer, NSCLC, Ovarian, and HPV-positive Anal-Cervical SCC.

This novel clinical trial, approved by the FDA, offers a promising avenue for patients with limited options for their respective tumor types. Initiated after FDA clearance of the Investigational New Drug (IND) application for T-Plex, the trial aims to revolutionize cancer treatment by focusing on personalization and multiplexed TCR-T therapy.

T-Plex, a Personalized Approach to Solid Tumor Treatment:

T-Plex represents a groundbreaking approach in TCR-T Cellular Therapy, using a patient's unique tumor profile to craft a personalized treatment regimen. By targeting specific tumor antigens and HLA expression patterns, T-Plex utilizes multiplexed TCR-T therapy to address the complexity of solid tumors.

This individualized strategy is a significant advancement in personalized medicine, offering potential improvements in treatment effectiveness.

Foundation in ImmunoBank for Adaptive Treatment:

Integral to T-Plex's development is the proprietary ImmunoBank, housing TCRs derived from patients with positive responses to immunotherapies. This diverse bank enables the selection of highly active TCRs for creating a living treatment that is both personalized and adaptive.

The trial process involves prescreening patients for specific HLA subtypes, tumor interrogation for specific targets like HPV-16, MAGE-A1, and PRAME, followed by apheresis, genetic engineering of immune cells, and their reintroduction to the patient, accompanied by additional medicines to optimize the body's response.

Invitation to Explore T-Plex:

Patients, caregivers, and healthcare providers are encouraged to explore T-Plex as a potential treatment option, marking a significant step in OHCI's commitment to developing innovative and more effective therapies for cancer treatment. This trial signifies a move towards precision oncology, offering hope for patients facing challenging solid tumors. For further details, please contact Karin Donaldson.

[Read the full article](#)

[READ BLOG](#)



Radiology

To Early detection

Early cancer detection is a game-changer, significantly improving treatment success rates, reducing costs, and enhancing overall quality of life for patients



Radiology is instrumental in the timely detection and diagnosis of cancer, a role of paramount importance highlighted on the occasion of World Day of Radiology. This article underscores the vital contributions of radiology in elevating cancer care and awareness, emphasizing its role in ensuring better patient outcomes through early detection.

Early identification of cancer is crucial, significantly improving treatment success rates, reducing costs, and enhancing overall quality of life for patients. The ability to intervene at an early stage is pivotal in achieving positive health outcomes.

Radiological imaging techniques, including mammography, CT scans, MRI, and ultrasound, are integral components of screening programs for various cancers. Mammograms, for instance, are a widely recognized tool for breast cancer screening, while CT scans play a crucial role in detecting lung cancer, particularly in high-risk populations with a history of smoking. Magnetic Resonance Imaging (MRI) is employed for screening prostate and brain cancers, while ultrasound is effective in screening ovarian and testicular cancers.

Radiologists conduct minimally invasive procedures, such as image-guided biopsies and tumor ablations, contributing to precise diagnoses without resorting to traditional surgery. Technological advancements, including molecular imaging like PET scans and the integration of artificial intelligence, have revolutionized cancer detection. These innovations offer enhanced visualization of cellular processes within tumors and support accurate diagnosis and risk stratification.

A multidisciplinary approach involving oncologists, radiologists, pathologists, and other healthcare professionals is essential for effective cancer care. Collaborative efforts ensure comprehensive patient management, covering diagnosis, treatment planning, and ongoing monitoring of treatment response.

In the spirit of World Day of Radiology, it is imperative to recognize and celebrate the invaluable contributions of radiology in advancing cancer care globally. Through ongoing technological advancements and collaborative efforts, radiology continues to be a cornerstone in the early detection and improved management of cancer, underscoring the importance of this field in healthcare worldwide.

Read the full article

[READ BLOG](#)



Radiology serves as a beacon of progress in cancer care, illuminating the path towards early detection and heightened awareness.



Empowering the Fight

AGAINST GASTRIC CANCER

FDA Amends Pembrolizumab's Indication

The FDA's swift approval of pembrolizumab heralds a new era in gastric cancer treatment, offering hope and efficacy in the relentless fight against HER2-positive adenocarcinoma. Together, we accelerate progress and empower lives in the world of oncology



In a groundbreaking move on November 7, 2023, the Food and Drug Administration (FDA) redefined the landscape of gastric cancer treatment with pivotal updates to pembrolizumab's (Keytruda, Merck) indication.

This update signals a significant stride in advancing cancer therapies and instilling newfound hope in patients and healthcare providers alike.

The FDA's revision specifies pembrolizumab's role as a first-line treatment for locally advanced unresectable or metastatic HER2-positive gastric or gastroesophageal junction (GEJ) adenocarcinoma.

Crucially, this indication now includes the use of pembrolizumab in combination with trastuzumab, fluoropyrimidine, and platinum-containing chemotherapy. The eligibility criterion involves tumors expressing PD-L1 (CPS ≥ 1), as determined by an FDA-approved test.

Complementing this groundbreaking approval is the green light given to the Agilent PD-L1 IHC 22C3 pharmDx as a companion diagnostic device.

This device ensures a targeted and personalized approach to treatment by

Read the full article

assisting in the selection of patients whose tumors express PD-L1 (CPS ≥ 1). It aligns with the FDA's commitment to precision medicine in cancer care.

Key insights from the clinical trial, KEYNOTE-811, underscore the efficacy of pembrolizumab.

A multicenter, randomized,

double-blind study, the trial revealed a remarkable objective response rate (74%) in the pembrolizumab plus chemotherapy arm, surpassing the placebo plus chemotherapy arm (52%). These outcomes, coupled with a generally consistent safety profile, provide a solid foundation for healthcare providers and patients.

[READ BLOG](#)



Navigating Life with

Neuroendocrine Cancer

A Comprehensive Guide to Enhancing Well-being

**NET
CANCER
DAY**

10th November

NET CANCER DAY

Living with neuroendocrine cancer brings forth a spectrum of challenges, spanning the physical, emotional, and social aspects of one's life. In this journey, cultivating the right mindset and seeking the necessary support can be transformative, allowing individuals to effectively manage symptoms and optimize their overall quality of life. Here, we delve into practical tips for handling common challenges associated with neuroendocrine cancer and emphasize the crucial role of supportive care services.

Neuroendocrine tumors (NETs) are rare cancers originating in specialized cells throughout the body, including the gastrointestinal tract, lungs, and pancreas. The complexity of managing NETs arises from their varied nature—ranging from indolent to aggressive. Most NETs are nonfunctional, but a subset of small bowel NETs can cause symptomatic issues due to the release of serotonin and other factors. To navigate this intricate treatment landscape, staying informed is key.

Addressing symptoms associated with neuroendocrine cancer is crucial for enhancing well-being. From common issues like flushing and diarrhea to managing fatigue, individuals can take proactive steps. For instance, lifestyle adjustments, such as avoiding triggers and adopting a fiber-rich diet, can significantly alleviate symptoms. Medications like somatostatin analogs and loperamide may also be prescribed for targeted relief. As we emphasize the importance of managing symptoms, it's crucial to remember that personalized advice from healthcare professionals is paramount.

Living with neuroendocrine cancer brings forth emotional challenges, including anxiety stemming from the uncertainties surrounding the disease. Open communication with healthcare teams, seeking professional support, and employing mindfulness techniques can aid in managing anxiety. Building a robust support network comprising friends, family, and fellow patients creates a nurturing environment for sharing experiences and seeking advice. The emotional rollercoaster that accompanies a chronic illness can be navigated more effectively when shared within a supportive community.



Navigating neuroendocrine cancer requires understanding, support, and a proactive approach to managing symptoms. Together, we can enhance our quality of life in this journey.

Read the full article

[READ BLOG](#)



Antibiotics in Oncology:

Navigating Their Dual Role in Cancer Care



In the war against cancer, antibiotics remain crucial allies. Yet their power demands respect, careful stewardship, and an informed approach to safeguard their effectiveness



In the intricate world of oncology, antibiotics play a pivotal, multifaceted role—serving as stalwart guardians against bacterial threats while posing potential challenges to cancer treatments and the delicate microbiome of patients. This exploration delves into the complexities of antibiotic use in cancer care, unraveling how they operate, their necessity, and the critical importance of judicious use, particularly concerning their impact on the efficacy of immunotherapy.

Antibiotics, powerful agents against bacterial foes, showcase varied battle tactics. From sabotaging cell walls to disrupting DNA replication, these microbial warriors are indispensable in addressing a spectrum of bacterial onslaughts, ranging from common infections to life-threatening conditions like bacterial meningitis. However, their potency is confined to bacteria, rendering them powerless against viral adversaries like the flu or common cold.

The Intersection of Antibiotics and Oncology

In oncology, antibiotics assume a delicate role—prophylactically preventing infections in immunocompromised cancer patients. Yet, this delicate balance requires vigilant stewardship, as overuse or misuse can breed antibiotic resistance, a threat perilous to cancer patients, potentially jeopardizing treatment regimens and intensifying the severity of infections.

The Tenets of Antibiotic Stewardship in Cancer Care

Prudent antibiotic stewardship becomes paramount in oncology, embracing discerning prescription, completing prescribed courses, recognizing their ineffectiveness against viruses, and prioritizing preventive strategies.

Guarding the Efficacy of Immunotherapy: The Microbiome-Antibiotic Interplay

An insightful examination reveals a critical revelation: the composition of the gut microbiome profoundly influences the success of immunotherapies like immune checkpoint inhibitors (ICIs). Misapplied antibiotics can disrupt this microbial landscape, undermining the very therapies designed to combat cancer.



Read the full article

[READ BLOG](#)



Subscribe to

MEDONCMD



Never miss an issue!

- Join our compassionate community
- Follow us on Social Media
- Stay informed, stay connected

CLICK HERE



Visit our Website

www.medoncmd.com

- Get first-hand information on [“Ask Medoncmd”](#)
- Find usefull articles
- Research advances
- Prevention and healthy lifestyrle

CLICK HERE





MEDONCMD